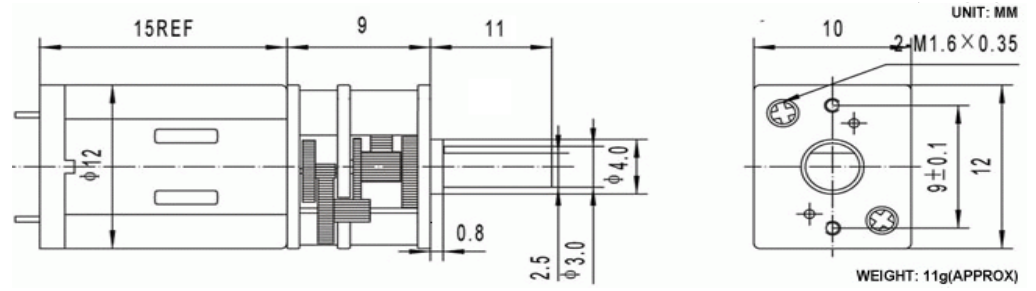
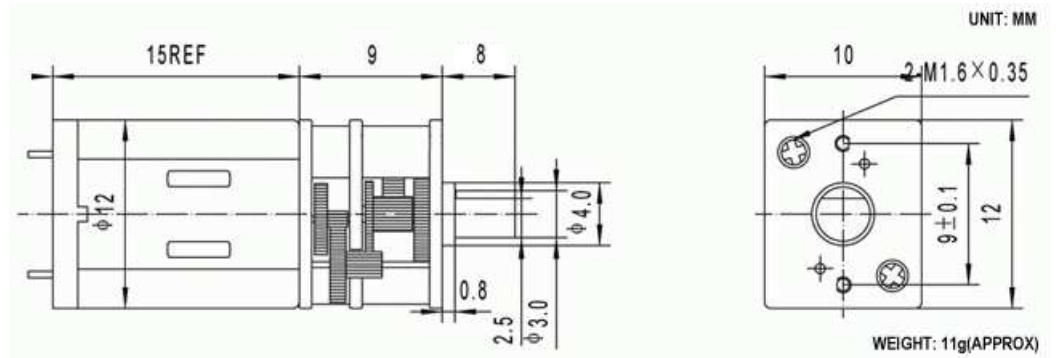


# Silniczki z przekładniami

MTG70, MTG140



MTG30



MODEL	VOLTAGE		NO LOAD		AT RATED LOAD			AT STALL		Gearbox
	VDC		SPEED	CURRENT	SPEED	CURRENT	TORQUE	TORQUE	CURRENT	Length
	WORKING	NOMINAL	rpm	A	rpm	A	kg. cm	kg. cm	A	L
MTG30	1.5-7.2	6.0	30	≤0.050	22	≤0.20	0.80	3.50	≤1.8	8
MTG70	1.5-7.2	6.0	71	≤0.050	52	≤0.21	0.460	1.99	≤1.8	11
MTG140	4.5-13.0	12.0	140	≤0.05	104	≤0.25	0.61	3.80	≤1.6	11

ET-SGM12D-05300	1.5-7.2	5.0	300	≤0.050	240	≤0.21	0.125	0.539	≤1.8	9
ET-SGM12D-05150	1.5-7.2	5.0	150	≤0.050	109	≤0.21	0.228	0.988	≤1.8	9
ET-SGM12D-05100	1.5-7.2	5.0	100	≤0.050	72	≤0.21	0.342	1.46	≤1.8	9
ET-SGM12D-0571	1.5-7.2	5.0	71	≤0.050	52	≤0.21	0.460	1.99	≤1.8	9
ET-SGM12D-0560	1.5-7.2	5.0	60	≤0.050	44	≤0.21	0.550	2.37	≤1.8	9
ET-SGM12D-0550	1.5-7.2	5.0	50	≤0.050	36	≤0.21	0.626	2.60	≤1.8	9
ET-SGM12D-0540	1.5-7.2	5.0	40	≤0.050	26	≤0.21	0.775	3.45	≤1.8	9
ET-SGM12D-0515	1.5-7.2	5.0	15	≤0.050	9	≤0.21	1.950	7.80	≤1.8	12

This list only show a few part of the performance, we adjust the DC motor performance and Gear ratio to make the motor according to customers' specified requirements, including the voltage, speed, torque and current.

Gearbox Shaft length is adjustatble. But we usually have 4.4mm, 8mm and 10mm shaft stocks through the year.