

MCB's EN/IEC 60898-1

4500
3

Performances

Thermal setting (In)	6-63 A
Rated voltage AC (Un)	230/400V
Tripping characteristic	B and C
Short-circuit capacity acc. EN/IEC 60898-1	4.5kA
Selectivity class	3
Terminal capacity	25 or 2 x 10 mm ²
Poles	1P, 1PN, 3P, 4P
Weight	115g/pole

RCCB'S EN/IEC 61008-1 - Type AC 

Performances

Thermal setting (In)	25-63A
Residual current (IΔm)	30-300mA
Rated voltage AC (Un)	230-400V
Short-circuit capacity (Inc)	6000A at 230/400V fuse 63A gG
Nuisance tripping resistance	AC: 250A 8/20μs
Terminal capacity	35mm ² or 2 x 16mm ²
Poles	2P-4P
Weight	2P: 210g 4P: 375g

MCB's - Characteristic B

In (A)	Cat. Nr.	Nr. Poles	Ref. Nr.	Pack.
6	DE91EB06	1	690749	12
10	DE91EB10	1	690750	12
16	DE91EB16	1	690751	12
20	DE91EB20	1	690752	12
25	DE91EB25	1	690753	12
32	DE91EB32	1	690754	12
40	DE91EB40	1	690755	12
50	DE91EB50	1	690756	12
63	DE91EB63	1	690757	12
6	DE91EB06N	1+N	690926	6
10	DE91EB10N	1+N	690927	6
16	DE91EB16N	1+N	690928	6
20	DE91EB20N	1+N	690929	6
25	DE91EB25N	1+N	690930	6
32	DE91EB32N	1+N	690931	6
40	DE91EB40N	1+N	690932	6
50	DE91EB50N	1+N	690933	6
63	DE91EB63N	1+N	690934	6
6	DE93EB06	3	690767	4
10	DE93EB10	3	690768	4
16	DE93EB16	3	690769	4
20	DE93EB20	3	690770	4
25	DE93EB25	3	690771	4
32	DE93EB32	3	690772	4
40	DE93EB40	3	690773	4
50	DE93EB50	3	690774	4
63	DE93EB63	3	690775	4
6	DE94EB06	4	690944	3
10	DE94EB10	4	690945	3
16	DE94EB16	4	690946	3
20	DE94EB20	4	690947	3
25	DE94EB25	4	690948	3
32	DE94EB32	4	690949	3
40	DE94EB40	4	690950	3
50	DE94EB50	4	690951	3
63	DE94EB63	4	690952	3

MCB's Characteristic C

In (A)	Cat. Nr.	Nr. Poles	Ref. Nr.	Pack.
6	DE91EC06	1	690587	12
10	DE91EC10	1	690588	12
16	DE91EC16	1	690589	12
20	DE91EC20	1	690590	12
25	DE91EC25	1	690591	12
32	DE91EC32	1	690592	12
40	DE91EC40	1	690593	12
50	DE91EC50	1	690594	12
63	DE91EC63	1	690595	12
6	DE91EC06N	1+N	690935	6
10	DE91EC10N	1+N	690936	6
16	DE91EC16N	1+N	690937	6
20	DE91EC20N	1+N	690938	6
25	DE91EC25N	1+N	690939	6
32	DE91EC32N	1+N	690940	6
40	DE91EC40N	1+N	690941	6
50	DE91EC50N	1+N	690942	6
63	DE91EC63N	1+N	690943	6
6	DE93EC06	3	690605	4
10	DE93EC10	3	690606	4
16	DE93EC16	3	690607	4
20	DE93EC20	3	690608	4
25	DE93EC25	3	690609	4
32	DE93EC32	3	690610	4
40	DE93EC40	3	690611	4
50	DE93EC50	3	690612	4
63	DE93EC63	3	690613	4
6	DE94EC06	4	690953	3
10	DE94EC10	4	690954	3
16	DE94EC16	4	690955	3
20	DE94EC20	4	690956	3
25	DE94EC25	4	690957	3
32	DE94EC32	4	690958	3
40	DE94EC40	4	690959	3
50	DE94EC50	4	690960	3
63	DE94EC63	4	690961	3

RCCB's - Type AC

In (A)	IΔm	Cat. No.	No. Poles	Ref. No.	Pack.
25	30	DBFI25/030-2	2	690780	6
40	30	DBFI40/030-2	2	690781	6
63	30	DEFI63/030-2	2	608429	6
25	30	DEFI25/030-4	4	608431	3
40	30	DEFI40/030-4	4	608498	3
63	30	DEFI63/030-4	4	608909	3
25	300	DBFI25/300-2	2	690969	6
40	300	DBFI40/300-2	2	690970	6
63	300	DEFI63/300-2	2	608430	6
25	300	DEFI25/300-4	4	608432	3
40	300	DEFI40/300-4	4	608499	3
63	300	DEFI63/300-4	4	608935	3



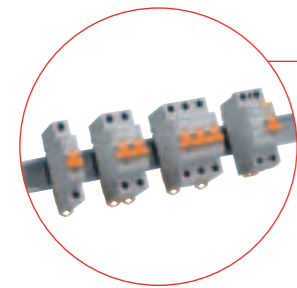
New DMS-line

MCB's and RCCB's for domestic installations

AEG



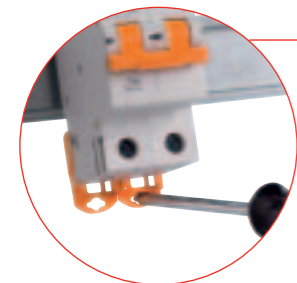
Compliant with domestic standards EN/IEC 60898-1 and EN/IEC 61008-1



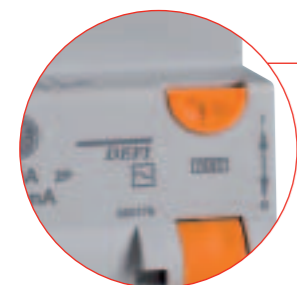
Quality clips
Easy fixing on DIN rail
User friendly and reliable



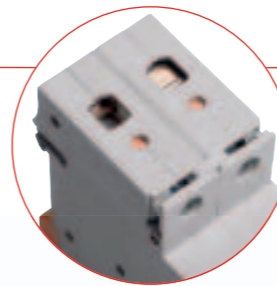
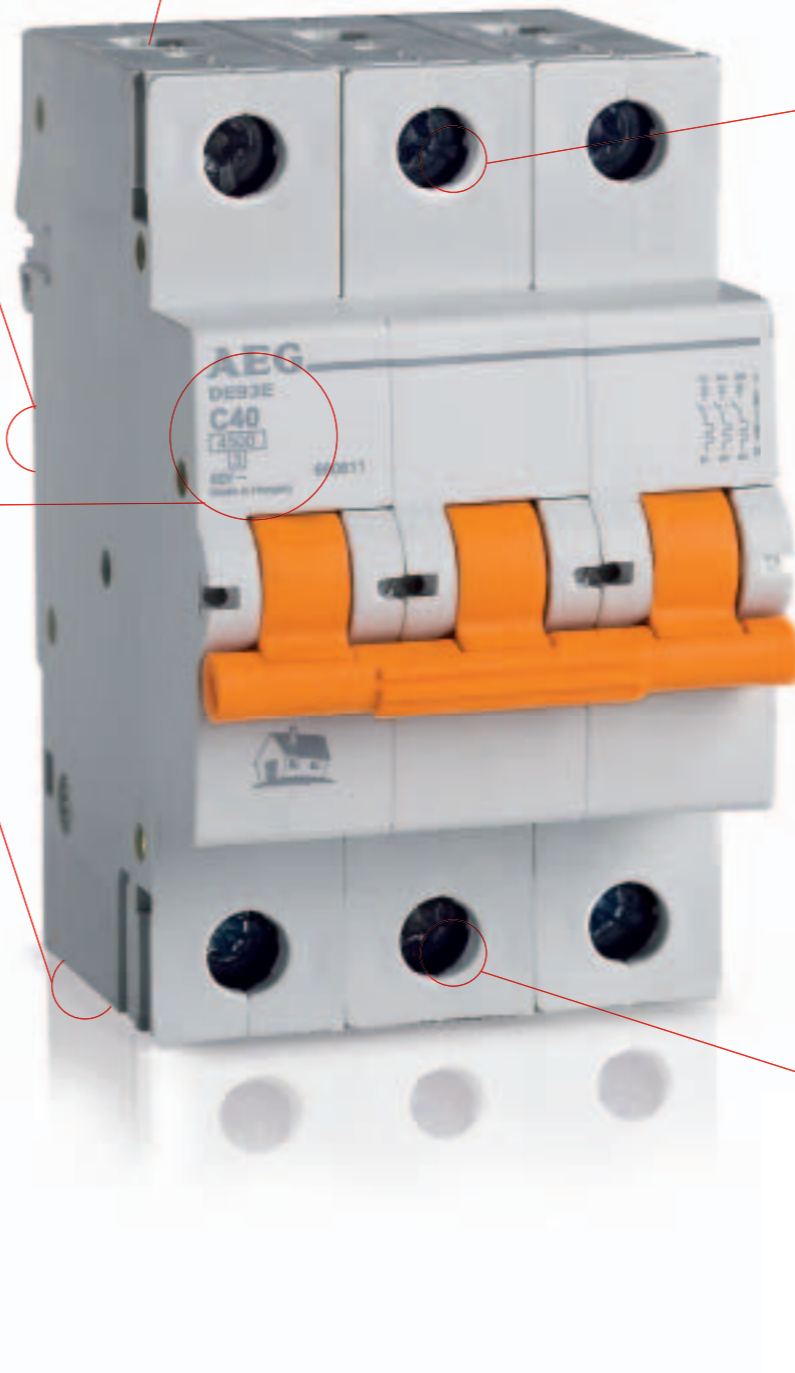
Clear identification
- Current rating - Tripping curve
- Interrupting capacity
- Selectivity class
- Product codification
- Laserprinting



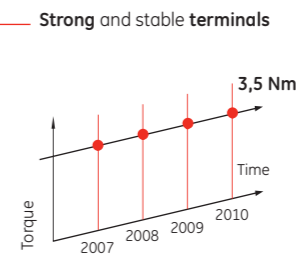
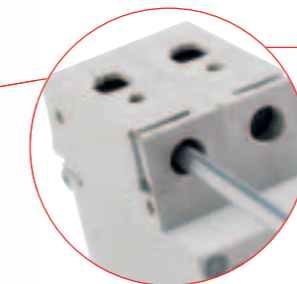
2 position & dynamic clips
Ensure easy and reliable fixations
Flat and pozidrive screwdrivers



RCCB
No unwanted tripping
Flat and flush mounted orange push-button



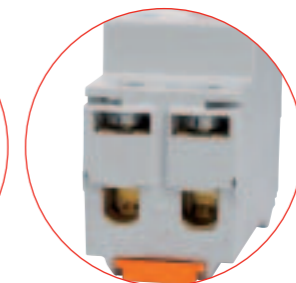
Safety terminals
Ensures safe connection
No risk of miss-insertion of cables and busbar



High torque terminals
3.5 Nm for MCB's
4.5 Nm for RCCB's

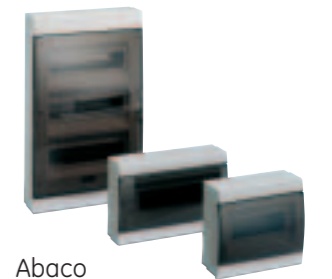


High capacity terminals
25mm² or 2 x 10mm² for MCB's
35mm² or 2 x 16mm² for RCCB's
Fork connection possibilities



Protected terminals IP 20

Insulated enclosures suited for DMS-line installations



Abaco



Europe Line

